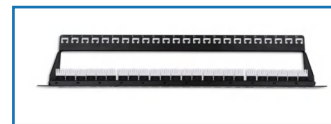
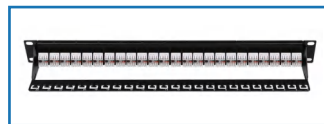


24 Way Patch Panel CAT6

DESCRIPTION

Sharkrack™ patch panels offer high performance and reliability. Designed to be easily installed to meet the requirements of all CAT6 networking by incorporating removable CAT6 Keystone Jacks for a fast termination and more customised solution.



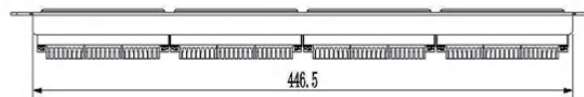
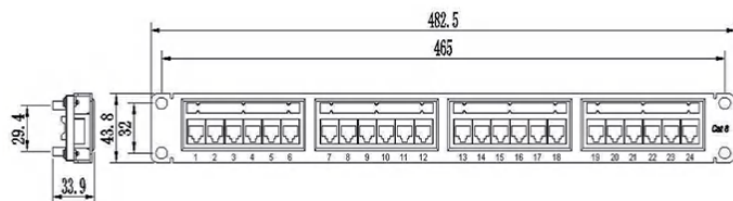
SPECIFICATIONS

- 19-inch mounting width suitable for most networking equipment.
- Conforms to industry standard ANSI/EIA-310-D and IEC 60297-3 mounting configuration.
- CAT6 UTP 24-port patch panel, 110 type, matches and exceeds CAT6 350MHZ connecting hardware specifications, comply with Gigabit Ethernet applications, suitable for interaction and termination of horizontal cabling between devices, equipment and centralized points.
- Unique exterior design, simple and useful.
- High strength die-casted zinc alloy shielding design meets the industry shielding standards.
- Meet the requirements of both T568A and T568B, with colour labels.
- 110 krone punch down compatible. 4 pair one crimp tool available for fast terminations.
- Solid and corrosion phosphor bronze IDC enables over 250 terminations.
- With 50µ" gold plate, durability is 1500 matching recycles.
- Cable management in the rear for effective guidance of cables and termination points.
- Backward compatible with Cat6 or lower level.

LOSS AND RESISTANCE

Description	Parameter
Contact resistance(max)	100mΩ
Insulation resistance(min)	500mΩ
Return loss(dB)	5.8dB

DIMENSIONS



CONFIGURATIONS

PART NUMBER	DESCRIPTION	HEIGHT	WIDTH	DEPTH
DPPC6U24	SharkRack 24 Port Patch Panel Cat6 UTP Fully Loaded	43.8mm (1.72 inches)	482.5mm (19 inches)	33.9mm (1.33 inches)

